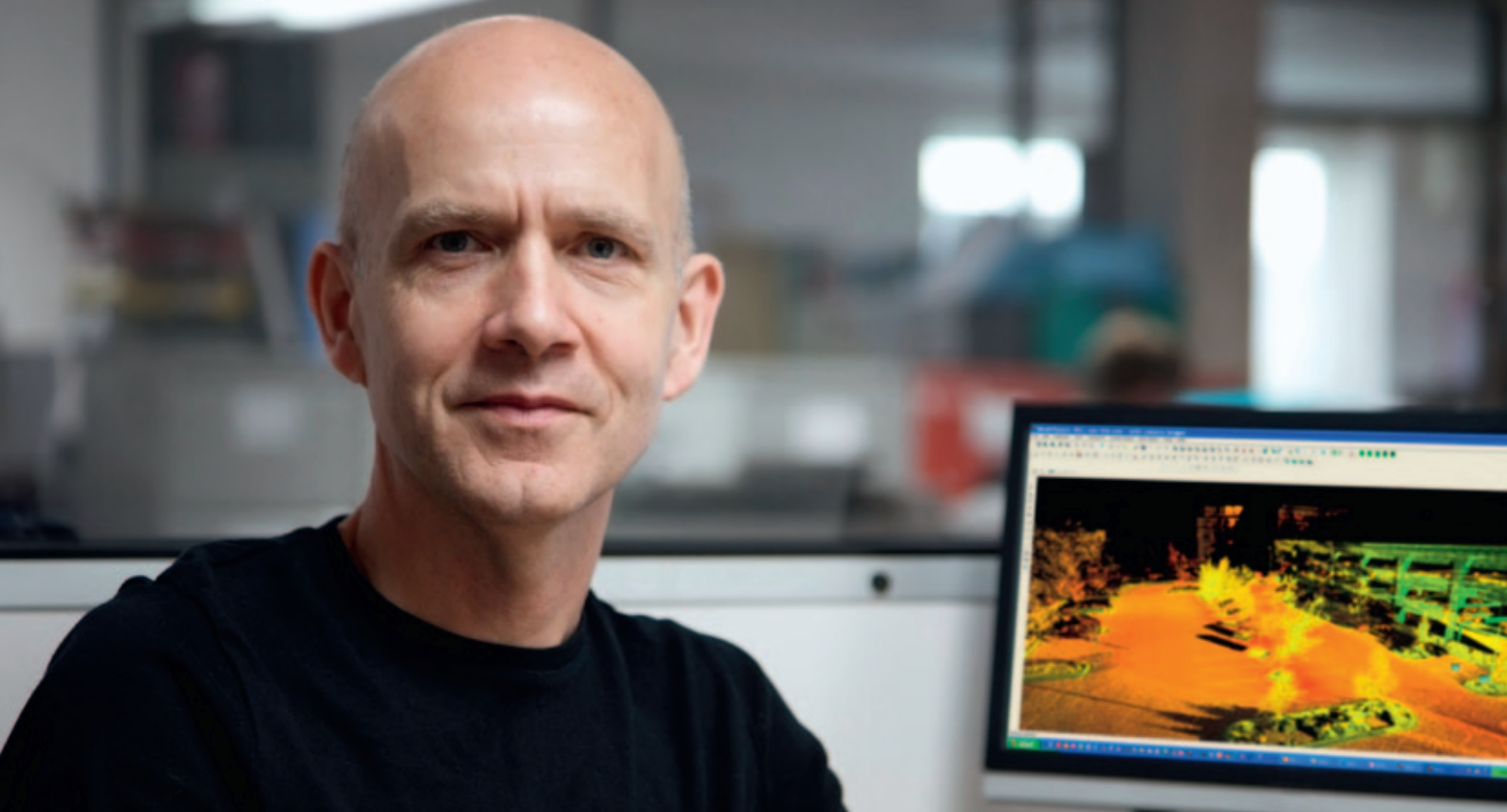


# Leica Cyclone IMPORTER 7.3

## Data import from third-party laser scanners



**The Leica Cyclone IMPORTER 7.3 software module provides users with optimal office efficiency for working with scan data from third-party scanners within the industry's most popular point cloud software solutions: Cyclone and CloudWorx.**

The Leica Geosystems Cyclone and CloudWorx family of software products represent state-of-the-art point cloud processing solutions. While Leica Geosystems also provides the industry's leading laser scanners, some organizations have a need to utilize data from other vendors' scanners, yet still want to take advantage of the capabilities of Leica Geosystems software and prefer to do so in the most efficient way.

In addition to a user's ability to work with any scan data in neutral formats such as ASCII, PTS, PTX, and PTG, Cyclone IMPORTER 7.3 software allows Cyclone and CloudWorx users to work with point

cloud data from third-party scanners in the native data format directly output by these scanners. This capability avoids time-consuming data conversion steps to neutral data formats and it minimizes the size of imported files for what are often large data sets.

The ability for Leica Geosystems to provide this native data format import capability from third-party laser scanners is based on direct agreements with scanner manufacturers who want users of their scan data to be able to work efficiently within Cyclone and CloudWorx software.

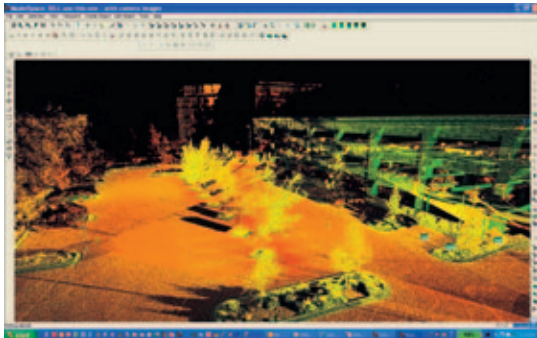
#### **Supported Third-Party 3D Laser Scanner Manufacturers**

- Faro
- Riegl
- Optech
- Z+F

- when it has to be **right**

**Leica**  
Geosystems

# Leica Cyclone IMPORTER 7.3



Direct importing of data in native format from third-party scanners provides greater office efficiency and versatility for Cyclone and CloudWorx users who need to work with such data.

## Native format compatibility with third-party laser scanners

With Leica Cyclone IMPORTER 7.3 and CloudWorx users can import third-party laser scanners native formats. This allows the full and efficient use of all the valuable Cyclone modules and features such as registration, 3D modeling, data analysis, Cyclone PUBLISHER and TruView, Cyclone II TOPO and all that the Cyclone modules offer.

In addition to individual scans, Cyclone IMPORTER 7.3 also supports the importation of registration transformations from other vendors. This provides the flexibility to leverage registration work if it has already been done in another scanner manufacturer's software. Therefore, in addition to doing productive work in Cyclone, IMPORTER also supports a workflow where users can do most of the work in a third-party system and simply use IMPORTER to bring the data into Cyclone format for delivery to a customer or to comply with contractual delivery specifications.

In addition to its direct importing features, Leica Cyclone IMPORTER 7.3 also supports a vast array of the standard visualization features of Cyclone so it can be used in a standalone manner. Users can browse the imported data visually. IMPORTER also supports a long list of other important project data formats such as BMP, JPG, LandXML, etc.

Leica Cyclone IMPORTER 7.3 Specifications*		Hardware and System Requirements
<b>Visualization</b>	Full 3D fly, pan, zoom, rotate. Control color mapping using intensity, true-color, gray scale, color by elevation	<b>Minimum Specifications</b>
<b>Import</b>	Data from CAD via COE (Cyclone Object Exchange)	<b>Processor:</b> 2 GHz Dual Core processor or better
	Control data from ASCII formats & X-Function DBX	<b>RAM:</b> 2 GB (4 GB for Windows Vista or Windows7)
	FARO:FLS and FWS	<b>Hard Disk:</b> 40 GB
	Optech: IXF	<b>Display:</b> SVGA or OpenGL accelerated graphics card (with latest drivers)
	RIEGL: 3DD and RSP	<b>Operating system:</b> Windows XP (SP2 or higher) (32 or 64), Microsoft Vista or Windows7 (32 or 64)
	ZFC, ZFS, SCAN, SC2, C10 Project	<b>File System:</b> NTFS
	BMP, TIFF, JPEG, PNG	<b>Recommended Specifications</b>
	LandXML, SIMA	<b>Processor:</b> 2.5 GHz Dual Quad Core i7 or higher
	LAS	<b>RAM:</b> 4 GB for 32 bit OS and 8 gb's or more 64 bit OS
		<b>Hard Disk:</b> 1 TB SATA
		<b>Large project disk option:</b> RAID 5, 7, or 10 with SSD drives
		<b>Display:</b> Nvidia GeForce250 or ATI 6850 or better, with at least 1 GB memory
		<b>Operating system:</b> Microsoft Windows7 64 bit
		<b>File System:</b> NTFS

Windows is a registered trademark of Microsoft Corporation. Other trademarks and trade names are those of their respective owners.

Illustrations, descriptions and technical data are not binding. All rights reserved. Printed in Switzerland - Copyright Leica Geosystems AG, Heerbrugg, Switzerland, 2011. 767659en - IX.11 - RDV

- \* This feature only available for scanners with internal cameras.
- \*\* Reference the Leica Cyclone 7.3 Technical Specifications document for a complete listing of product specifications.
- \*\*\* Some systems may not support Windows Vista's Desktop Windows Manager (DWM) with Leica Cyclone and must be operated in Windows Classic Look.
- \*\*\*\* Only supported with Windows XP operating system