

What's Great in FME 2012



FME Desktop 2012: Quickly Whip Your Data Into Shape¹

FME® Desktop 2012 offers even more cunning tools to easily overcome the data snares and interoperability riddles on your journey to unleashing the power within your Temple of Data.

Decipher Difficult Data Problems Even Faster

Experience new enhancements that help you work even faster as you transform your data to use and share.

DARING NEW USABILITY ENHANCEMENTS

FME Workbench already saves users hours, even days, of effort in transforming their data. Can it operate any more efficiently? Yes!

- Transformer dialog improvements take the guesswork out of your efforts.
- Attribute and parameter handling are now much easier to configure.
- Fewer transformers do more of the work, making your workspaces more efficient with less.
- Full screen mode makes it even easier to work on large workspaces with ease.

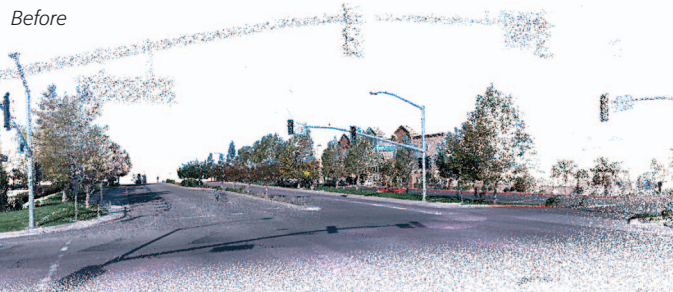
Don't worry, all updates are backwards compatible, so your existing workspaces will continue to run without a hitch!

GREAT SPEED IMPROVEMENTS, AS ALWAYS

To help you get your work accomplished more quickly, every version of FME is even faster than the last:

- Workspaces transforming enormous point cloud (or LiDAR) datasets, for example one billion points, are now 20 times faster.
- Dissolving and buffering tasks now operate up to 1000 times faster in many common use cases.
- Small translations now operate 20% faster overall – which is especially valuable when many small jobs are being run in sequence.

Before



After



FME 2012 makes it easy to perform 3D filtering and clipping tasks – for example, on point cloud datasets as shown above – to easily prepare your data for use.

Stash New Tools in Your Satchel

Experience next generation support for point clouds (LiDAR), XML, 3D datasets, and coordinate systems, all designed to help you accomplish more on your next data adventure.

GROUND-BREAKING SUPPORT ENHANCEMENTS FOR POINT CLOUDS (LiDAR)

Transform millions or billions of points in one dashing swoop – up to 20 times faster than the previous release.

Now you can also perform cubic clipping and splitting by color to quickly extract the portion of the dataset you care about. Plus, FME now supports LAZ, the compressed LAS format, and Oracle® Spatial Point Cloud, for easy storage and access.

MAKING IT EVEN EASIER TO WORK WITH XML

It's now even easier to work with XML data and metadata. FME includes new and enhanced transformers and newly supports these XML-based formats:

- AIXM 5.1 Reader
- INSPIRE Reader
- OpenGIS® CityGML 1.1 Reader & Writer including ADE support
- Top50NL Reader

MORE, PRACTICAL SCENARIOS FOR 3D DATA

Now you can more easily accomplish your goals with 3D data. Based on feedback from customers, we made a variety of improvements including making 3D clipping z-aware, adding transformers that enable you to work more easily with 3D local coordinate systems, and enhancing surface modeling.

FME also offers new support for Microsoft® DirectX® reading and writing, a new PRESAGIS® OpenFlight reader and enhanced writer, IFC reading enhancements, and more.

COORDINATE SYSTEM SUPPORT CONTINUES TO EXPAND

FME 2012 increases support for coordinate systems including:

- Regional updates and new NTv2 grids for a variety of European countries
- New support for Geocentric coordinates and Geoid heights, particularly valuable when working with point cloud datasets
- New and improved transformers that make it easier to work with 3D coordinate systems

For more of what's new in FME 2012, visit: www.safe.com/fme2012



¹ or any of 275+ other formats!

FME Server 2012: Face Data Requests with Confidence

Deliver the Newest Information in Real Time

TRANSFORM DATA FROM THE WEB EVEN FASTER

With its new real time capabilities, FME Server makes it easier to move and transform data that resides on the web. Now you can easily access data that's available online or consume data streams – for example, directly from sensors – for use in your transformation workflows.

Instead of downloading data from the web and uploading it to FME Server, now you can simply point FME Server to the data. This makes sensors and other live data feeds perfect candidates for use by FME Server 2012. The possibilities that this opens up are endless, as now FME Server is able to respond to data events in real time.

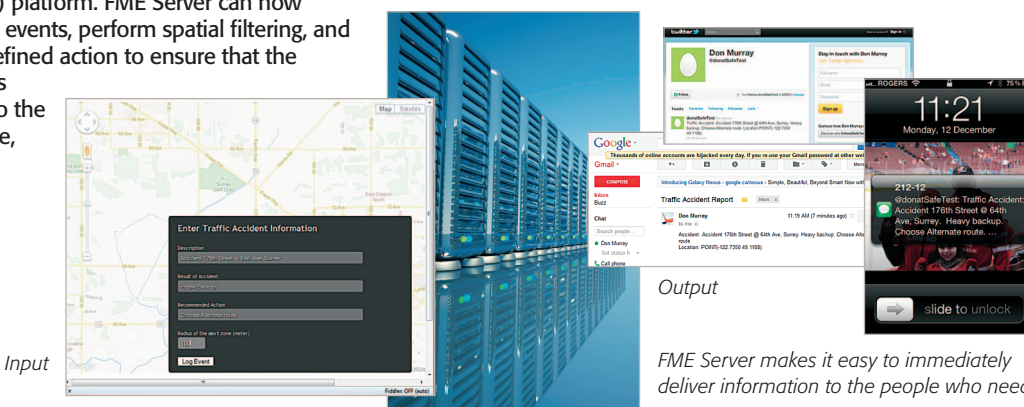
RELAY HIGHER VALUE INFORMATION QUICKLY

Power smarter business decisions with the new “data push” capabilities provided by FME Server 2012. Now you can evaluate data against rules and relay relevant information to the people, systems and services that need it, immediately.

In the past, users had to go to FME Server and request the data they needed. Now FME Server has the ability to push data out as soon as it becomes available. Examples include but are not limited to: email, SMS (cell phone text messaging), Twitter, any web application, etc.

This is all accomplished through simple workspaces that run rules you pre-define. Plus, this new architecture makes workflow management even easier to administrate by offering simple topic-based triggers to handle next workflow actions in the appropriate sequence.

The new event-driven architecture of FME Server makes it an ideal spatial CEP (complex event processing) platform. FME Server can now respond to events, perform spatial filtering, and take pre-defined action to ensure that the right data is delivered to the right people, right away. Every time.



Stay Ahead of Crushing Demands

GET FME SERVER INSTALLED IN LESS THAN 10 MINUTES

Enterprise software installed in less than 10 minutes? You bet! FME Server now makes it easier and faster to get people started:

- Easier distributed installation saves IT time.
- Express install FME Server in < 10 minutes.
- New Amazon Machine Image (AMI) out-of-the-box cloud deployment in < 10 minutes without any infrastructure, saving IT overhead.

AMI is a fast way to try FME Server before you purchase.

TIGHTLY CONTROL WHO ACCESSES YOUR DATA ASSETS

New security enhancements make it even easier to maintain a tight grip on who can, and can't, access your data assets. Microsoft Active Directory® integration now makes implementing security rules a breeze, and more granular security options give you greater control on who can see and do what.

KEEP DATA FLOWING WITH MORE FLEXIBLE SCHEDULING CAPABILITIES

Ensure that data keeps on moving into the hands of the people who need it with new scheduling options in FME Server. Now you can:

- Set up scheduled tasks, and then run them as needed – thanks to new job pausing capabilities.
- More easily configure scheduled tasks by using new published parameter driven setup.
- Experience more efficient setup of scheduled tasks due to usability enhancements.

For more of what's new, visit:
www.safe.com/fme2012

New Formats

- AIS Reader
- AIXM 5.1 Reader
- CAT Reader
- DataFile Reader, Writer
- Esri® ArcPad® Reader
- Free Esri File Geodatabase API
- Google Fusion Tables™ Reader, Writer
- INSPIRE Reader
- LAZ Reader, Writer
- Microsoft DirectX Reader, Writer
- OpenGIS CityGML 1.1 Reader, Writer
- Oracle Spatial Point Cloud Reader, Writer
- Ordnance Survey® VectorMap® District Reader
- PRESAGIS® OpenFlight Reader (enhanced Writer)
- Supermap® Reader, Writer
- Top50NL Reader

About Safe Software & FME

Transform spatial data to use and share. Only Safe Software's FME delivers unlimited flexibility to restructure 275+ formats. Solve more interoperability headaches more easily with FME: www.safe.com.